

# Environmental Management System

What Terumo aims for is safe health care and harmony with the environment.

We established our Basic Environmental Policy in 1999, and it was based on our corporate philosophy, of contributing to society through health care.

As a leading company in the health care field, we strive to protect the global environment.

## Terumo's Environmental Policy

Adopted in December 1999

Guided by our corporate philosophy of contributing to society through healthcare, and under a fundamental policy of providing safety and reassurance in medical care, the Terumo group conducts itself as a leading company by implementing responsible environmental conservation activities and striving to be a trusted corporate citizen.

Terumo sets voluntary targets and works to conserve the environment by:

- ascertaining the environmental impact of our activities ●developing environmentally friendly products
- preventing pollution ●making effective use of energy and resources ●reducing waste

Terumo abides by the environmental laws, ordinances, agreements and other legal provisions of all countries.

Terumo has established a system to facilitate environmental efforts and it promotes and audits those efforts.

As a member of society and the community, Terumo supports and cooperates with environmental conservation activities.

Terumo conducts in-house informational and educational activities in an effort to increase its employees' environmental awareness.

## Environmental Management System

We are working to improve our environmental performance through an efficient and effective environmental management system that focuses on the true core of ISO 14001: the PDCA cycle. We ensure the transparency of these efforts by publishing descriptions of them each year in our Social and Environmental Report.

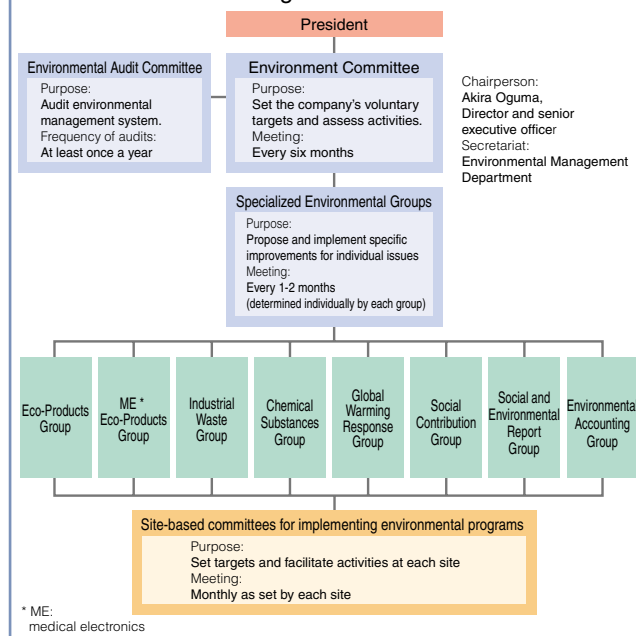
Each business site advances environmental initiatives based on voluntary targets set by our Environmental Committee. The figure to the right shows Terumo's companywide organization for environmental management. As the ultimate decision-making authority in the company, the Environmental Committee sets companywide policies and targets for environmental conservation, tracks the status of activities, and the like. There is also an Environmental Audit Committee, which is responsible for internal audits to ensure that each site is effectively operating its environmental management system, and works to maintain the objectivity and fairness of internal audits, and improve its independent auditing techniques.

Specialized environmental groups work to implement specific improvements for specific issues.

Site environmental committees propose and promote the implementation of site action plans in accordance with policies decided by the Environmental Committee, share information, and conduct education activities.

We emphasize the use of environmental accounting for site-internal management goals, and do not publish environmental accounting figures externally. For this reason, we have ended the activities of the environmental accounting group as a companywide organization.

### Companywide Organization for Environmental Management:



### Message from the Environment Committee Chairperson

Terumo's environmental-conservation activities are shifting from internal efforts – such as efforts involving paper, waste, and electricity – to the second stage of environmental-conservation activities (globalization efforts to reduce the impact on the area surrounding our sites and the environmental impact of our products). We are committed to improving our environmental-conservation efforts in order to win the trust of society.



Akira Oguma, Manager, Environmental management department  
Director and senior executive officer